



6 Schulz Avenue, Whyalla Norrie, SA 5608

Ph.: 08 8645 7266

Fax: 08 8645 0811

Email: dl.0938.info@schools.sa.edu.au

www.hincksps.sa.edu.au

Hincks Avenue Primary School

Newsletter

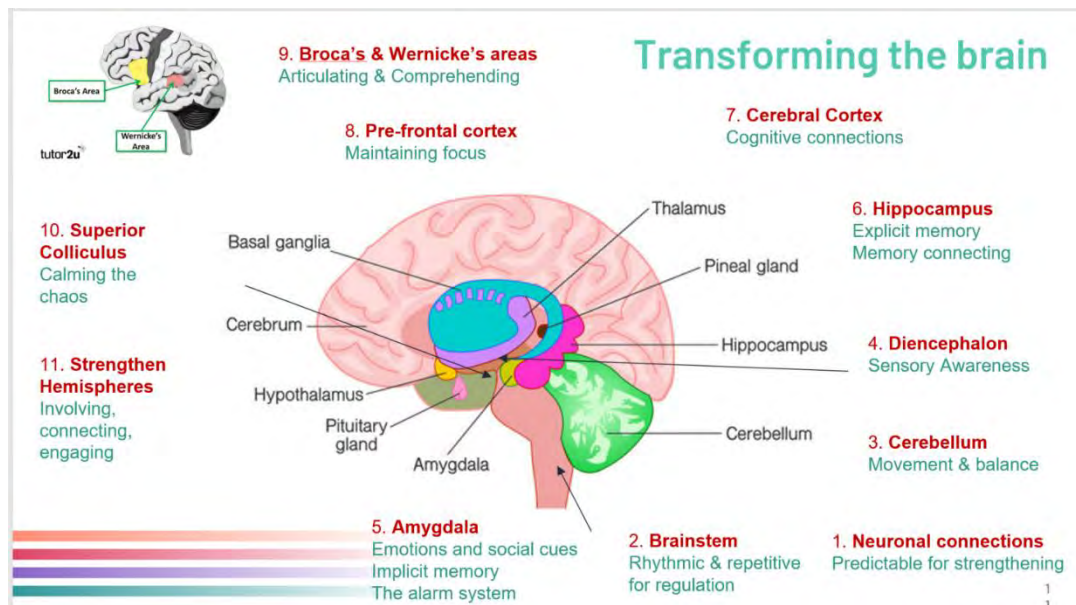
No 3.

March 22nd 2024

From the Principal

Dear Parents / Caregivers,

Last week we had a Student Free day (after the public holiday) with a focus on Maths Engagement and spent some time planning for our Student Wellbeing Programs. I am going to share this slide with you, which explains the purpose of these programs:



Our Student wellbeing programs are designed to particularly focus on strengthening areas 1 to 5. These are the foundational skills that are beneficial for being present, centred and learning in the classroom. Sometimes extra work in these areas of regulation, sensory awareness, social understanding and emotional appreciation can really make a difference to a child feeling successful in the classroom. If your child is engaged in a Wellbeing program, these are the things they will be working on. If you would like to know more about this, please feel free to come and talk with us.

We also spent some time focusing on Maths Engagement. More specifically, if we teach our kids to think and reason mathematically then we will better engage them in Mathematics. I particularly like the work of Professor Francis Su who talks about Mathematics for Human Flourishing. A short video can be found here and there are longer ones on YouTube if you are keen:

<https://www.youtube.com/watch?v=UitkuhpDUpc>

Embracing mathematical thinking fosters a growth mindset. This is an outlook that sees challenges as opportunities for growth rather than obstacles to success. By encouraging our students to embrace mistakes as valuable learning experiences, we cultivate a culture of perseverance and self-belief that paves the way for lifelong learning and achievement. As partners in your child's educational journey, I invite you to join us in celebrating the wonders of mathematical thinking and its transformative potential. Feel free to talk with your child's teacher about this.

Kindest regards,
Melissa Gloede

2024 Term 1 Dates

Mar 27th – Easter Raffle Drawn

Mar 29th – GOOD FRIDAY PUBLIC HOLIDAY

Apr 1st – EASTER MONDAY PUBLIC HOLIDAY

Apr 3rd – School Photo Day

Apr 11th – Table Tennis Carnival

Apr 12th – End Of Term 1 - 2:10pm finish.

Outside of School Hours Contact

If you need to contact the school for any reason (eg. positive covid case, student absences) outside of school hours or on the weekend, please either:

- Phone the school on **8645 7266** and leave a message on the answering machine. This is checked daily each morning through the school week.

or

- Text our school number **0417 237 036**. This gets checked daily and checked regularly on weekends as well.

NEW PHONE NUMBER

We have a new Virtual Number now live!

0417 237 036

This number can be used to text message us for student absences, booking meetings, questions etc.

Like & Follow Us

facebook



KISS & DROP BUS LOOP

If you need to park your car to walk into the school to drop or pick up your child, please park on the road or in the carparks, **not in the bus loop.**

The bus loop is a 'kiss and drop/pick up' area, not a 'leave the car to get your child' park. We have had complaints that parents are unable to drive through the bus loop to drop their children off due to some parents parking and leaving their car there.

There are car parks located around the school. One on Hincks Avenue, just up from the bus loop, and one on Schulz Avenue, in front of and next to the gym. Parents are able to park here in the mornings and in the afternoons.

The main gate on the Hincks Avenue side is open for both mornings and afternoons. The side gate on Schulz Avenue, near the JP playground, is only open in the afternoons from 3pm.

Award Winners – Term 1, Week 8

Assembly Awards: Be Respectful, Be Responsible, Be Your Best

Jathan Dujmovic, Tucker Dunn-Hugo, Jakayla Watson, Ao Marama Doidge-Mohi, Matthew Bartsch, Harper Zubrinich, Lexi O’Callaghan, Luna Phillips, Jacob Sowton, Peter Johncock, Levi Warren, Louella Goldsmith.



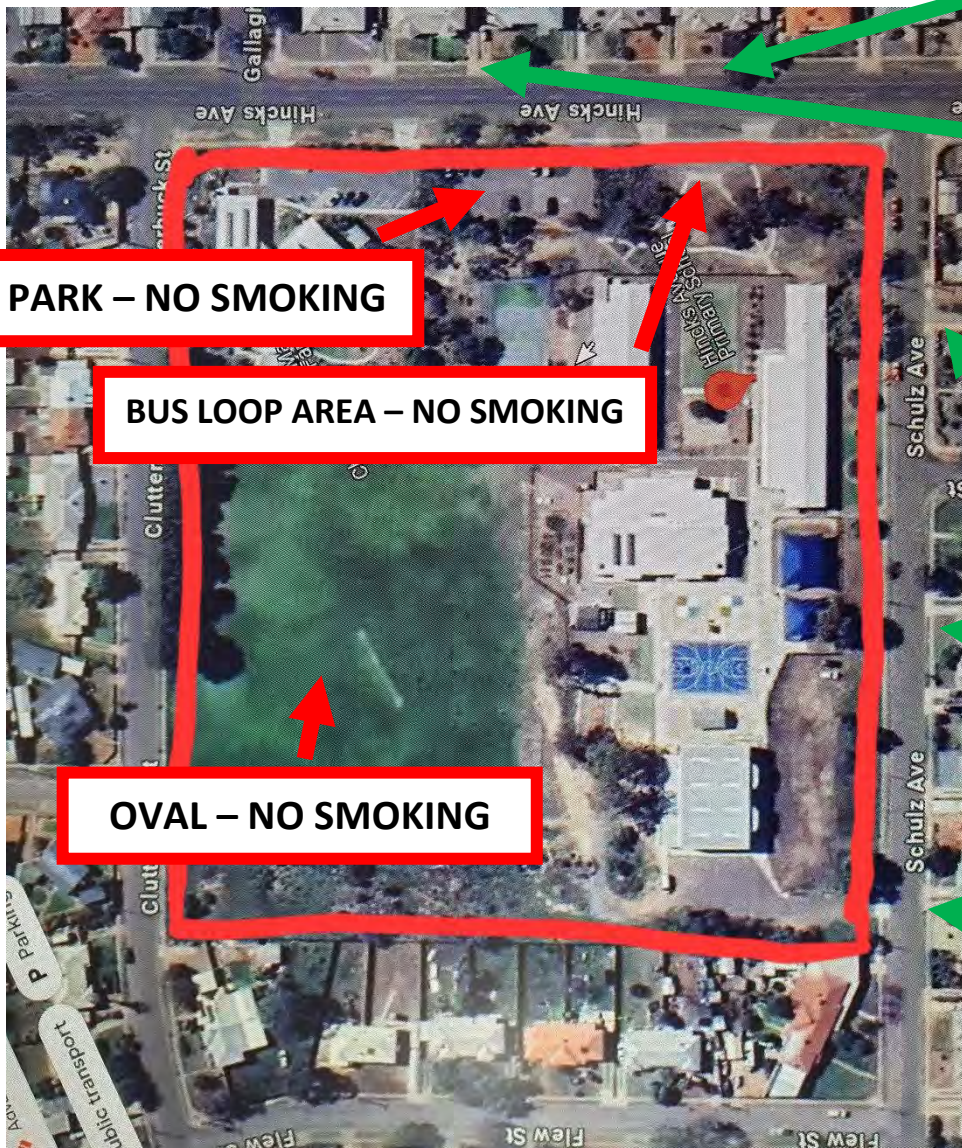
SMOKING NEAR SITE BOUNDARIES

From 1 March 2024, new regulations will extend the smoke-free and vape-free areas to within 10 metres of site boundaries.

This includes no smoking & vaping:

- School drop-off and pick-up zones that are within 10 metres of the school fence, gate or boundary
- School ovals and sporting fields and within 10 metres of the boundary of the oval or sporting field
- Footpaths, roads, public nature strips and public recreation areas that are within 10 metres of a school boundary.

Please see below photo that shows our school boundary and safe areas for smoking/vaping.



SAFE SMOKING & VAPING AREAS

- Across the road from the bus loop on Hincks Avenue (anywhere along this side of the road)
- Across the road from the office on Schulz Avenue (anywhere along this side, there is an alleyway across from the office).

News from The Incredibles 4/5

In The Incredibles this term, we have been working on building positive relationships. In the first two weeks, we created a piece of collaborative artwork to represent our classroom.



The symbol on the left represents awareness. It is about understanding the things we need to help improve our mental wellbeing and knowing when and where to reach out for help. The symbol in the middle represents belonging. It is about looking out for each other, feeling safe and supported in our environment and understanding that however, we feel, we always have people that will help us. The symbol on the right represents connection. It is about our relationships with our friends, families and people we care about that help keep us happy and healthy.

In HASS this semester we have been looking at geography, specifically the way that humans can impact the environment and how different environments can have an impact on people. We are currently researching different biomes such as rainforests, deserts and grasslands and the different countries that these can be found. We also looked at the Supercontinent Pangea and created our own narratives about what life might be like if everyone in the world still lived on one continent.

Football Carnival

On Thursday 7th of March, a team of year 5/6 students attended the AFL carnival at Jubilee oval. A majority of our side had limited AFL game experience however; they were enthusiastic about the possibility to learn new skills.

The team was highly motivated participating in training sessions in their lunchtimes leading up to the event. This was evident in the way the team was able to work well together.

The Hincks team finished second out of 8 teams, which is a huge improvement from previous years. A big thank you to all the parents that came out to support and help goal umpire on the day.

Our team consisted of Ruby Chapman, Ashleigh Macrae, Tyler Oswald, Adelyn Taylor, Bianca Gill, Shannon Peel, Elliot Rincon-Parker, Reggie Betts, Axel Hammond, Charlee-Ann Franklin, Joross Floria, Alex Johnson, Kaine Ainslie.

The team was coached by Mr. McArthur and Tyler R.



Exclusion Periods from childcare, preschool and school for certain infectious diseases.

See below for information regarding how long students need to stay home for different infectious diseases.

- Vomiting - Exclude until no vomiting for at least 24 hours.
- Diarrhoea - Exclude until no diarrhoea for at least 24 hours.
- Conjunctivitis - Exclude until discharge from eyes has stopped (unless a doctor has diagnosed non-infectious conjunctivitis).
- Chickenpox - Exclude until all blisters have dried (usually 5 days).
- COVID-19 - A person with COVID-19 should stay home until acute symptoms have cleared (usually 5 to 7 days).
- Hand Foot & Mouth - Exclude until all blisters are dry.
- Headlice - Exclude until appropriate treatment has commenced
- Influenza and influenza-like illnesses - Exclude until well (at least 5 days for adults and 7-10 days for children)
- Ringworm - Exclude until the day after appropriate treatment has commenced.
- School Sores - Exclude until appropriate treatment has commenced. Any sores on exposed surfaces should be completely covered with a dressing.
- Whooping Cough - Exclude from childcare, school or workplace and similar settings until 5 days after starting antibiotic treatment, or for 21 days from the start of any cough.

For more information visit:

<https://www.sahealth.sa.gov.au/wps/wcm/connect/public+content/sa+health+internet/conditions/infectious+diseases/exclusion+from+childcare+preschool+school+and+work>

order your school photos now

to order visit: www.advancedlife.com.au

enter code: 29Z 5TZ HY6



scan to order

**or collect a cash order envelope
from your school office**



advancedlife
school photography & print specialists

2024 EASTER RAFFLE

**This year Mr Sims year 6 class will be running the Easter Raffle.
We are seeking donations of anything easter related to use for prizes.
If you are willing and able to donate, please drop it to Kirsty Sampson**

At the front office by

Monday 25th March

Any Donations will be greatly appreciated!

Kind Regards

Russell Sims, Kirsty Sampson, Rob Macalister

